

OFFICIAL VISITOR GUIDE 2020

PORTSMOUTH



WWW.VISITPORTSMOUTH.CO.UK



Portsmouth Historic Dockyard

THE UK'S PREMIER DESTINATION FOR NAVAL HISTORY

Book online
& save
20%



historicdockyard.co.uk



Welcome to Portsmouth The Great Waterfront City

With a perfect location on England's south coast, Portsmouth is home to world-class attractions, fabulous shopping, amazing events and a fantastic cultural and creative offer. Add to this an array of evening entertainment, mouth-watering food and great places to stay, and you can see why Portsmouth is the top choice for a short break or day visit.

A visit to the iconic Emirates Spinnaker Tower is a must during your visit; enjoy the breath-taking panoramic views across Portsmouth and beyond. Stay on the waterfront with a visit to Gunwharf Quays to shop at over 90 premium designer outlets and eat at one of 30 cosmopolitan bars and restaurants.

A short walk takes you to Portsmouth Historic Dockyard, home to the finest maritime heritage in the world, including the historic ships HMS Victory, HMS Warrior 1860, Mary Rose and M.33, along with the National Museum of the Royal Navy.

Stroll through the cobbled streets of Old Portsmouth and walk along the waterfront to Southsea where you will find miles of beach and seafront attractions. Visit Henry VIII's castle and The D-Day Story museum.

Portsmouth has great literary connections. Discover more about the city's Sherlock Holmes connection at Portsmouth Museum and visit the birthplace of the great author, Charles Dickens.



HMS QUEEN ELIZABETH

City of the sea

As the UK's only island city, home to an unparalleled collection of maritime heritage, the Royal Navy and great sailing – including the home base of Ben Ainslie's Ineos Team UK, Portsmouth has always had a love affair with the sea.

HMS Queen Elizabeth and HMS Prince of Wales, the Royal Navy's new aircraft carriers, are both based in Portsmouth. If you are lucky, you may time your visit when one of these is in port and available to view from the water.

Coming soon – Landing Craft Tank (LCT) 7074

LCT 7074 is one of the last surviving examples of a massive landing craft from D-Day. This 59-metres (200-feet) long landing craft could carry up to ten tanks and their crew and on 6 June 1944, she carried tanks to one of the five beaches picked as the landing site for the Allied troops; Gold beach in Normandy.

This enormous vehicle is currently being conserved and once this work is complete it will be transported to Southsea Seafront, to later open as part of

The D-Day Story. Two tanks, will take pride of place on the deck of LCT7074 as a permanent reminder of the work undertaken by this unsung hero.

Conserving and opening LCT 7074 to the public is a joint project between The National Museum of the Royal Navy and The D-Day Story Portsmouth, with funding from the National Lottery Heritage Fund.

DAY ONE



48
HOURS
in
Portsmouth

With world-class attractions, great places to shop and history around every corner, Portsmouth really does offer much more than you could squeeze into a day trip. So don't miss out on all the city has to offer – book yourself a weekend break to enjoy all the highlights.

1pm – The Mary Rose

Start off your visit with a trip to the Mary Rose museum and discover all about the ship and her crew.

It was off the coast of Portsmouth that Henry VIII's flagship sank during battle with the French. She lay at the bottom of the Solent for 437 years, before the largest marine salvage operation ever undertaken raised her to the surface. The ship is now on display at her very own museum, alongside the many hundreds of Tudor artefacts that were also recovered.



4pm – Old Portsmouth

Head from the Mary Rose across to the historic quarter of Old Portsmouth – the location of Portsmouth Anglican Cathedral and a host of historic fortifications ready to explore. It's a haven of cobbled streets, Victorian townhouses and a great many pubs and restaurants for an evening meal. It's also worth paying a visit to the Hotwalls Studios, where talented designer-makers create and showcase their wares.



KINGS THEATRE

All this packed into 48 hours – and you've still only scratched the surface! This is exactly why you need much longer than a day to truly explore what Portsmouth has to offer.



EMIRATES SPINNAKER TOWER

10am – Portsmouth Historic Dockyard

After a good breakfast (you'll need it for all of today's exploring!) it's time to visit Portsmouth Historic Dockyard. Here you can get on board HMS Victory, the flagship of Vice-Admiral Lord Nelson's fleet, or take a walk along HMS Warrior 1860, the world's first iron hulled ship. In fact, there are 11 attractions to discover at the dockyard – including a harbour tour – all of which you can explore with one ticket.



HMS WARRIOR, PORTSMOUTH HISTORIC DOCKYARD



DAY TWO



GUNWHARF QUAYS

1pm – Gunwharf Quays

A short stroll from the dockyard entrance lies Gunwharf Quays – the waterfront outlet centre. In addition to the big-name brands offering discount prices (everyone from Armani to Adidas, Levi's to Lindt) you'll find a host of coffee shops, bars and restaurants right at the water's edge. There's also a 14-screen cinema, bowling alley and contemporary art gallery to explore.

3pm – Emirates Spinnaker Tower

Gunwharf Quays is also where you'll find the Emirates Spinnaker Tower. Take a ride up to the view decks 100 metres above sea level to enjoy views stretching out for 23 miles of city, coast and country. There are panels throughout the view decks showing points of interest, and even the Café in the Clouds at View Deck 2 – where you can enjoy a very high tea.

5pm – World cuisine – take your pick

Whether you want posh pub grub, tempting tapas or a classic curry, Portsmouth can deliver. Castle Road, Osborne Road and Albert Road all have a huge variety of independent restaurants, offering authentic cuisine from all over the world. You certainly won't be short on choice!

7pm – A seafront stroll

Full up and sated from your evening meal, why not round off the day with a stroll along the seafront? The promenade offers miles of walkway, past two piers, one castle and lots more besides.



HENRY VIII'S SOUTHSEA CASTLE

10am – The D-Day Story

The D-Day Story, which sits between Southsea seafront and common, tells the personal accounts of those involved in the Normandy Landings of 1944. You can get fresh insight into what the operation involved, and how it totally changed the complexion of World War Two, as well as the lives of all those who took part.

12pm – Southsea Castle

Your 48 hours began with Henry VIII, so it's only fitting to end with the notorious king, too. The story goes that King Henry helped design Southsea Castle, influencing its shape to make it more like those on the continent at the time. He was also stood within the castle walls when The Mary Rose sank during the Battle of the Solent. Today, Southsea Castle has a museum, restaurant, gift shop and even an on-site brewery.

DAY THREE



THE D-DAY STORY

Five fab reasons to visit



Portsmouth Historic Dockyard

See HMS Victory like never before. Thirty million people have visited HMS Victory at Portsmouth Historic Dockyard but not even the iconic Great Britain Vice-Admiral Lord Nelson himself would have seen the remarkable views that are set to welcome visitors in 2020.

For the first time ever, the dry dock in which she sits, itself an ancient monument, is included on the visitor route. Visitors will descend into the dry dock via stairs and go under the 3,526-tonne naval marvel to glimpse her oldest areas, rarely seen, including the elm keel that has supported Victory since she was laid down over 260 years ago in 1759.

Gaining access to dry dock no. 2 is just part of a major new investment by The National Museum of the Royal Navy to tell visitors even more about Victory. A new gallery 'The Nation's Flagship' will

open to share the fascinating and ever-evolving tale of her construction, service and ongoing conservation.

Swashes are buckled and timbers shivered at the Historic Dockyard's incredibly popular blockbuster family exhibition 'Horrible Histories® Pirates' which is based on the best-selling series by Terry Deary and illustrator Martin Brown. As fans of the books and TV series will expect, 'Horrible Histories® Pirates' takes a funny and foul look into pirate history, complete with parrots, cutlasses, all the gore and more. The exhibition has been developed in association with Scholastic UK and has been shipped to Portsmouth across the seven seas, all the way from the Australian National Maritime Museum in Sydney.

In 1863 HMS Warrior embarked on a 'thank you' publicity tour around Britain,

offering an opportunity for the Royal Navy to showcase the ingenuity and technology behind the ship, as well as to show tax-payers how their money was being spent. Now you can be there too.

A dozen areas of the ship including the captain's cabin, galley and cabins belonging to senior officers have been opened to the public for the first time. Across all four decks, visitors can encounter costumed actors, each portraying a colourful character linked to the Round-Britain tour.

There has been a real buzz around Portsmouth since the arrival of the country's largest aircraft carrier HMS Queen Elizabeth, and now she's been joined by her sister ship HMS Prince of Wales. There really isn't anywhere better to catch a glimpse of this giant than from the Historic Dockyard. Choose the best vantage point, including from HMS Victory, or grab a Harbour Tour and imagine you're really on board.

www.historicdockyard.co.uk

The Mary Rose

Uncover the compelling world of Henry VIII's England at The Mary Rose, Portsmouth's number one attraction on TripAdvisor.

The Mary Rose tells an emotionally captivating story of Tudor times, bringing the personal stories of the crew to life through a fascinating, atmospheric exhibition of recovered objects. Get to know the officers, the carpenters, the

cook, the surgeon, and even the ship's dog! Find out how they ate, drank, worked and occasionally relaxed on board the king's mighty flagship.

Experience the stunning views of Henry VIII's favourite warship, which sank in 1545 and was raised spectacularly in 1982, and see the story come to life through engaging audio-visual projections and views onto the Mary Rose in a world-class immersive experience. Get to grips with a replica Tudor longbow and the ship's original anchor rope—you will never feel closer to the sights, sounds and smells of Henry's England!

www.maryrose.org



"....the Mary Rose Museum is in my opinion one of – if not the – most comprehensive and integrated museum experience in the UK and Europe."

TRIPADVISOR REVIEW



Emirates Spinnaker Tower

Emirates Spinnaker Tower stands at 170 metres tall, offering breath-taking 23 mile views over Portsmouth Harbour, the city, the Solent, the South Downs and the Isle of Wight.

The iconic structure is a popular destination, boasting a high-speed lift and three sky-high viewing decks. Venture across the thrilling glass floor at 100 metres above sea level; discover stories behind the surrounding sites with informative touch screen displays; try vertigo-inducing virtual reality; breathe in the view from the open air 'Sky Garden'; relax in 'The Clouds' with a glass of bubbly (pre-booking recommended); and enjoy delicious meals made with locally sourced ingredients in the Waterfront Café.

Thrill seekers can book on to one of the Tower's 100 metre abseil days. For something a little more decadent, book in advance for a 'High Tea' experience – a traditional afternoon tea served 110 metres up!

www.spinnakertower.co.uk

The D-Day Story

This new museum tells the story of D-Day in World War Two – from the preparation and build-up, to the landings and the Battle of Normandy. The story is told through the perspectives of the people involved, using authentic objects, interactives and stunning audio-visual.

The impressive 83 metre Overlord Embroidery offers a fantastic finale to the visit in the Legacy gallery, which also includes the 'Making of the Embroidery'.

New – the arrival of LCT 7074, opening as part of The D-Day Story (more information on page 5).

www.theddystory.com



Gunwharf Quays

Gunwharf Quays' relaxed approach to shopping makes it the perfect day out destination. With over 30 restaurants, bars and cafés, you can have a lazy lunch in Loch Fyne, enjoy French cuisine in Brasserie Blanc, share a platter in Nando's, indulge in a traditional afternoon tea at Patisserie Valerie or watch the boats go by in one of the many waterfront bars.

You can also visit the 14-screen multiplex Vue cinema, 26-lane Hollywood Bowl, Grosvenor casino and Aspex contemporary art gallery.

Furthermore, why not book a blast out on the Solent with Onboard RIBS, travel over to one of the Solent Forts or take a more leisurely tour around the harbour with full commentary. Children can follow the history trail around the centre matching landmarks with stickers or visit Horatio's Hideaway, the children's play area. In addition, during school holidays there is the opportunity to set sail at the Miniports and enjoy vintage fairground rides.

www.gunwharf-quays.com



IT'S ALL ABOUT THE WOW

A spectacular and iconic destination providing breath-taking 350 degree vistas and unique experience

BOOK ONLINE NOW spinnakertower.co.uk

Emirates SPINNAKER TOWER

Facebook, Twitter, Instagram, YouTube icons and **continuum attractions**

“It’s one of those places you will never forget. Magical.”

TripAdvisor

500 years. A heartbeat away. Book now and save at MaryRose.org

the Mary Rose

Beside the seaside



Henry VIII's Southsea Castle

Southsea Castle was part of a series of fortifications built in 1544 by King Henry VIII to protect the country from invaders, and from where he watched his favourite warship, the Mary Rose, tragically capsize and sink in 1545.

The castle keep explains the fortification's history while the ramparts offer amazing views. Enjoy a spot of lunch or a relaxing dinner at the castle's Courtyard Café, treat yourself at the Waterfront Gifts shop or visit the on-site micro brewery. This free seafront attraction is open March to October. www.southseacastle.co.uk (café open all year).

Blue Reef Aquarium

Discover the underwater world at Blue Reef—from sharks to clownfish, jellyfish to otters, there's plenty to see. Take in the colourful and exotic inhabitants of the coral reef in the spectacular underwater tunnel and come face to face with the wonders of the aquatic world. Explore the planet's rainforests as you encounter some of the most amazing amphibians—from deadly poison dart frogs to curious iguanas.

With more than 40 different displays, it's hard to decide what to see first!

In warm weather enjoy the Blue Reef Beach Club with its sandy beach, rock pool, sandpit and outdoor splash play area. www.blureefaquarium.co.uk

The Piers

A trip to the seaside wouldn't be complete without a visit to a pier and Southsea has two! South Parade Pier is ideal for a stroll. It offers spectacular views out across the Solent, plus restaurants, shops, pop-up eateries, fun activities and an arcade. The Gaiety Bar also hosts functions and events throughout the year.

Clarence Pier is one of the largest amusement parks on the south coast and boasts a range of amusements, rides and activities for all the family. The arcades and Pirates & Princesses indoor adventure playground are open all year round along with a range of places to eat and drink. www.clarencepier.co.uk

Cumberland House, Portsmouth Natural History Museum

Just by Canoe Lake is Cumberland House Natural History Museum, which includes a seasonal butterfly house. Meet the resident iguanodon, find out about Portsmouth's local wildlife (including the observational beehive) and explore the variety in the natural world in the A-Z of Natural History display. The gardens are an excellent place to spot local wildlife in its natural habitat, or enjoy a picnic during summery weather.

Open all year—butterflies on wing between May and September. www.portsmouthnaturalhistory.co.uk

Canoe Lake

This fun, family spot is popular for crabbing, pedalos and picnics. With a model village, rose garden, tennis courts, choice of cafés and play park complete with water splash, it's a must on sunny days.



HENRY VIII'S SOUTHSEA CASTLE

The seafront at Southsea is not to be missed, with the beach stretching four miles from Old Portsmouth to Eastney. Take in the sea air and treat yourself to an ice cream on the sunny promenade, looking out across the Solent, Europe's busiest waterway. On any given day you can spot ferries, cruise liners, yachts, tall ships and warships – including (if you are lucky) the brand new Queen Elizabeth Class aircraft carriers.

 Aerial view of Canoe Lake
Shaun Roster
www.shaurroster.com

Independent island

Many independent creatives, artisans, brewers and businesses are proud to call Portsmouth home.



SUPPORT THE MAKERS OF PORTSMOUTH

THE BREWHOUSE & KITCHEN



HIDEOUT COFFEE COMPANY



PIE AND VINYL

Brewing and distilling

Portsmouth has a long association with brewing and is home to a range of micro-breweries offering craft ales and the opportunity for visitors to find out more about the brewing process. Breweries include Southsea Brewing Company, The Brewhouse & Kitchen, Greenwich Brew Pub, Staggeringly Good Brewery and Irving Brewery to name just a few, offering beer for sale, tap rooms and brewery tours.

It is not just beer being brewed here.

Portsmouth Distillery makes gin and rum in the stunning setting of Fort Cumberland. Visitors can enjoy a full tour of the facilities, with expert explanations about the processes used in the creation of these fine spirits. The visit ends with a tasting and a chance to soak up some of the history—and of course the opportunity to make a purchase to take home!

Cafés and coffee shops

The island city has a great range of cafés and coffee shops to tempt you with fabulous food and drink.

Hideout Coffee Company in Lord Montgomery Way offers fabulous coffee and doughnuts plus much more. The Parade Tea Rooms on Western Parade and the Coffee Cabin on Southsea Common are both great for a bite to eat with fabulous views. Palmerston Road, Osborne Road and Marmion Road in Southsea also offer many tempting locations for coffee and a cake including Southsea Coffee Company, the Panero Lounge and Farm Kitchen.



Pie and Vinyl Record Café in Castle Road offers an eclectic range of vinyl to browse and a delicious range of hot pies. Nothing Ventured Vinyl in Albert Road is open on Friday and Saturdays for record sales and live vibes.

Dice in Albert Road and Game Over in High Street both offer gaming options, along with a drink and bite to eat.

Loaves and fishes

Treat yourself to some mouth-wateringly good bread at one of the city's artisan bakeries—try Bread Addiction and The Sourdough Bakehouse, both in Elm Grove, Southsea. For a taste of the sea head to the fish market in Old Portsmouth and check out the day's catch.

Getting crafty

The Hotwalls Studios in Old Portsmouth brings local artists, designers and makers together, in an exceptional heritage location. Visit on one of the Open Studios days to watch artists and makers at work and purchase or commission professional pieces. Take part in one of the many creative sessions including marble printing, macramé, portrait painting and weaving.

Join one of Southsea Bathing Hut's fun and informative workshops exploring the craft of natural skincare, held in the beautiful surroundings of their natural skincare apothecary.

This is just a small selection of what is on offer so check online at www.visitportsmouth/independentisland to find out more.



HOT WALLS STUDIOS



Sea views, top restaurants and world cuisine

Many restaurants at Gunwharf Quays and Port Solent boast glorious terraces overlooking the harbour and marina respectively.

When it comes to dining out, Gunwharf Quays has something to suit every taste, with over 30 restaurants such as Brasserie Blanc, Loch Fyne and Wagamama. Enjoy a laid back lunch, family meal or just catch up with friends.

Port Solent is perfect for a relaxing meal with views across the marina. Choose from one of 15 bars and restaurants including the very popular O Sole Mio Italian family restaurant, Gracie-Ann's independent tea room and chains including Zizzi, Harvester and many more.

Restaurant 27 and Montparnasse in Southsea both offer exceptional fine dining. For something less formal eat your way around the world at quirky cafés, brasseries, bistros and bars, with food choices including English, Belgian, Chinese, French, Greek, Indian, Italian, Japanese Korean, Lebanese, Mexican, Spanish, Thai, Turkish and Vietnamese!

For a taste of the sea you can't beat great fish and chips – for sea views head to Deep Blue on South Parade Pier or Southsea Beach Café and The Briny, both right on the beach front.

Combine your visit with one of the city's food events – the Seafood Festival in June or the Southsea Food Festival in July. Both offer food stalls, demonstrations, tastings and entertainment.

Old Portsmouth

Steeped in history, Old Portsmouth is perfect for a wander through cobbled streets and historic fortifications, followed by a fabulous meal at one of the many traditional pubs, restaurants, bars and coffee shops. In the warmer months eat and drink al fresco, with great views across the harbour.

Unique dining

For something completely different treat yourself to really high tea in the Emirates Spinnaker Tower, join one of the Tower's Sky Dining events, or head out to sea for a truly amazing meal on No Man's Fort in the Solent.

Explore www.visitportsmouth.co.uk for more mouth-watering choices on offer.

Food glorious food!

Take the time to treat yourself to some fabulous food while visiting Portsmouth, there is so much to choose from you're sure to find something to tickle your taste buds!

 Old Portsmouth
Tom Langford
www.tomlangfordphoto.co.uk

Portsmouth Pass

Your money-saving ticket to all the best attractions



The Portsmouth Pass is your ticket to all the biggest and best attractions the city has to offer. The Pass includes entry to The D-Day Story, Emirates Spinnaker Tower, Mary Rose and Portsmouth Historic Dockyard.

Buy your Portsmouth Pass online at thedaystory.com or purchase in person at the Visitor Information Centre at the Hard Interchange, or at any participating attraction.

visitportsmouth.co.uk/portsmouthpass

Culture by the coast

From live music to high drama, great events, literary and artistic highlights, and comedy to make you laugh until it hurts, Portsmouth's cultural programme offers something for everyone.



Victorious Festival
Tom Langford
www.tomlangfordphoto.co.uk

Hotwalls Studios
Sophie Twinning
www.sophietwinning.com

Aspex Gallery
Dan Boss

Kings Theatre
Alecsandra Raluca Dragoi

Unfortunately most events, performances and festivals have been cancelled this year. Below will give you a flavour of the kind of fabulous experience you can look out for in 2021 and beyond.

For literature lovers the **Portsmouth BookFest**, held in February and March annually, offers an exciting programme of book events and writing workshops, featuring acclaimed authors and writers, at a variety of location across Portsmouth. www.portsmouthbookfest.co.uk

Portsmouth is the city where the great author **Charles Dickens** was born and the world famous detective **Sherlock Holmes** was created. Visit the Dickens' Birthplace Museum and Portsmouth Museum to find out more about these iconic figures from British literature.

Gamers! Prepare to get your geek on at **Guildhall Games Fest** in February at Portsmouth Guildhall with an unbeatable selection of retro, modern and board games and a range of VR experiences. Play on every retro games console

imaginable and experience the growing phenomenon of board gaming culture with a selection of hundreds of traditional and modern board games.

Portsmouth Comic Con – International Festival of Comics will be back on 1 and 2 May 2021. This event is held at Portsmouth Guildhall and brings the best of comic, film, TV and pop culture entertainment to the largest event of its kind in the South! Featuring International artists and a fascinating range of panels and exhibitions, Cosplay, VR, Gaming, Live FX, Steampunk and a Comic City full of merchandise.

Victorious Festival – the UK's biggest metropolitan music festival – will return to Southsea Seafront 27–29 August, 2021.

Victorious is the biggest festival weekend in the South this Summer with a carefully curated line-up that always includes the perfect combination of heavyweight headliners, family favourites and up and coming talent ensuring there is something for everyone.

Showcasing Southsea, Victorious' stunning seafront setting with a metropolitan backdrop creates the ultimate family-friendly festival experience. Alongside the scenery, experience an enormous free Kids Arena (Saturday and Sunday only), 13 stages packed with entertainment, bustling markets and an amazing atmosphere.

For more information and to purchase tickets visit www.victoriousfestival.co.uk

Portsmouth offers great Christmas entertainment. Enjoy ice skating on real ice in front of the impressive Portsmouth Guildhall and relax afterwards in the Alpine Chalet. For some traditional entertainment treat yourself to a pantomime or Christmas show at the city's venues.

More entertainment!

Portsmouth is home to two wonderful theatres offering a range of dramatic live entertainment, both keen to welcome guests back as soon as they are able. The

dignified and beautiful **Kings Theatre**, with its Italian Renaissance style of decor, is one of the most complete Matcham theatres in the country. It plays host to touring West End productions and a varied programme of opera, ballet, comedy, drama and music.

The newly renovated and much-loved **New Theatre Royal** in the heart of the city has enjoyed a long and fascinating history since first opening in 1856, and along with the Kings, is one of the few working Matcham theatres in the country. It is home to cutting edge dance, theatre, drama, music, comedy and children's performances and events. Both theatres also offer special behind the scenes tours.

In the heart of the city, the majestic **Portsmouth Guildhall** is yours to explore with a changing programme of events, exhibitions, tours, workshops and casual dining at The Square Kitchen. As evening falls the Concert Hall hosts some of the world's finest performers with an exciting programme of music, comedy, classical, dance, drama and family shows.

The Guildhall Studio offers an eclectic mix of music, comedy, drama, children's theatre, spoken word and a range of activities and workshops.

Groundlings Theatre is an exciting arts venue in Portsmouth based in the stunning Beneficial School. This small venue offers a varied programme of events for young and old, from pantos to comedy, new plays to Shakespeare.

Other live venues in the city include **The Pyramids**, the **Wedgewood Rooms** and **The Gaiety Bar** on South Parade Pier, all offering great music, comedy and more throughout the year. Many pubs also host live gigs and the city's clubs are great if you want to dance the night away.

Portsmouth also has a great film offer with **two multiplex cinemas** – at Gunwharf Quays and Port Solent – and a great independent film offer including **No. 6 Cinema** and **Southsea Film Society**.

Please note – event details may change due to COVID 19 – for full details and updates visit www.visitportsmouth.co.uk

Art for Art's Sake

Aspex Gallery in Gunwharf Quays presents an outstanding exhibition programme featuring works by contemporary artists from around the world. Aspex is also a great place to see Portsmouth's freshest artistic talent. Soak up the atmosphere in this former naval storehouse and make time for a coffee or bite to eat in the café.

Portsmouth Museum and Art Gallery is home to fine and decorative art galleries with changing displays. Spend time visiting the rest of this free museum and enjoy tea and cake in the beautiful gardens.

Take time to check out the **Hotwalls Studios** creative quarter in Old Portsmouth, where the city's historic fortifications have been transformed into thirteen working studios and a waterfront dining space. Other galleries in the city include the **Jack House Gallery**, the **Coastguard Studio** and **Art Space, Portsmouth**.



A shopper's paradise

GUNWHARF QUAYS

Portsmouth is perfect for a spot of retail therapy – from designer bargains to high street favourites, plus independent vintage and antique choices.

Gunwharf Quays, waterfront outlet shopping

Set on Portsmouth's historic waterfront, Gunwharf Quays is the UK's only waterfront shopping outlet where you'll find over 90 famous brands, many international, with savings of up to 60% off the original price. As well as men's and women's fashion, there's childrenswear, shoes and accessories, sportswear, homewares, lifestyle, gifting and beauty; in short, a shopper's paradise.

All the big names are here including Hugo Boss, Nike, Mint Velvet, Kate Spade, Reiss, Ted Baker, Paul Smith, Coach, and The White Company. And when you've shopped till you've dropped, you'll find an array of cafés, bars and restaurants to tempt you.

Southsea shopping

Southsea offers distinctive stores plus regular street markets including a monthly Hampshire Farmers' Market and weekly Love Southsea markets.

Palmerston Road and Marmion Road offer high street favourites along with chocolatiers, designer jewellery, boutiques and furniture – as well as a host of cafés and coffee shops.

Albert Road and Castle Road are considered two of the city's hidden gems, packed with independent shops selling fashion, furniture, antiques and collectables.

Hit the high street

Head to our city centre where there are over 200 stores and the indoor shopping mall Cascades, which is home to some of the biggest brand names in the UK. A traditional street market takes place from Thursday to Saturday, selling fresh produce, flowers and clothing.

Set sail for Port Solent

With a selection of boutique and branded stores, Port Solent marina offers a truly unique shopping experience. Treat yourself to something special or find the perfect gift for any occasion.



CASCADES SHOPPING CENTRE



ALBERT ROAD



GIVE YOURSELF A DIFFERENT DAY

Shop, eat and relax on Portsmouth's historic waterfront, with great savings on over 90 brands.

GUNWHARF QUAYS

WATERFRONT OUTLET SHOPPING

Your VIPs are
OUR VIPs

FLY BETTER

The fun starts the moment your kids step on board. With their favourite food, toys, games and over 90 children's TV channels, it's all part of our VIP service.

EMIRATES ECONOMY



**PORTSMOUTH'S
MOST RELAXING
WATERSIDE
DESTINATION**



EAT

DRINK



SHOP

**FREE
PARKING**

UNWIND



For more information visit: www.portsolent.com

Dining Lifestyle Shopping Boardwalk.Port.Solent ThePortSolent theportsolent



**LOCALLY
SOURCED
PRODUCE
WITHIN THE
23 MILE
VIEW**

**Emirates
SPINNAKER
TOWER**

**IT'S ALL ABOUT THE
WOW**

WATERFRONT CAFÉ

Delicious food, stunning views

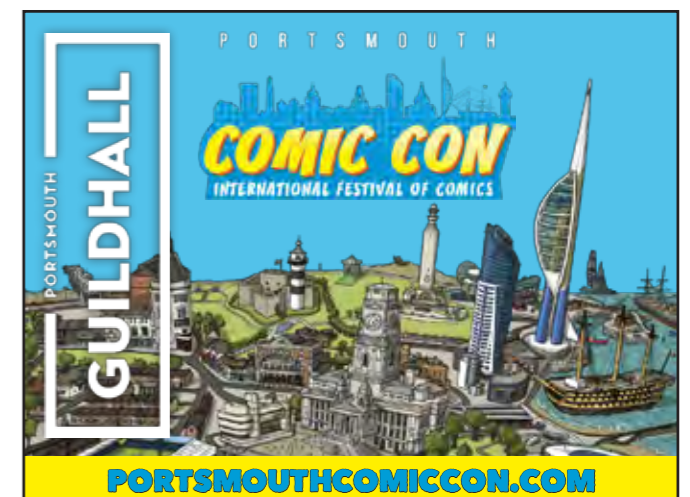
Open daily between 9.30am and 6.00pm
(last orders 5.30pm)

Situated on the ground floor of Emirates Spinnaker Tower, within Gunwharf Quays.

SPINNAKERTOWER.CO.UK



continuum
attractions



GUILDHALL

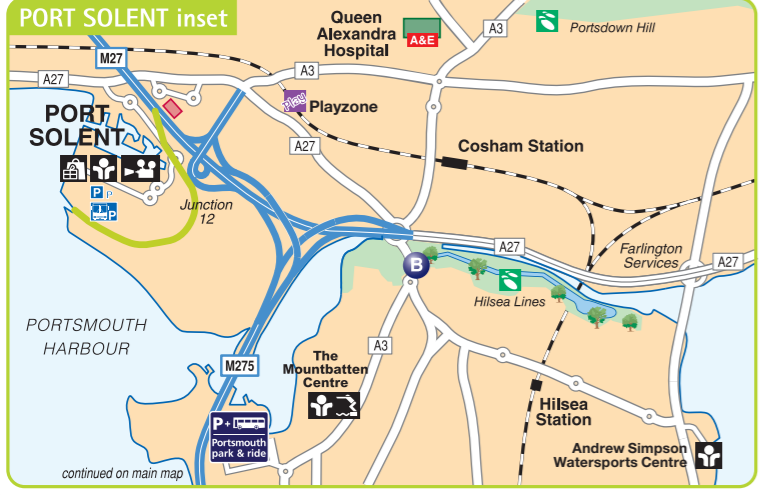
**PORTSMOUTH
COMIC CON**
INTERNATIONAL FESTIVAL OF COMICS

PORTSMOUTHCOMICCON.COM



**Discover
aspex**
Portsmouth's leading
contemporary
art gallery

Find us in Gunwharf Quays
Open Weds - Sun
11.00 - 16.00hrs
www.aspex.org.uk



- Key to Quarters**
- Central Southsea
 - City Centre
 - Historic Waterfront
 - Port Solent
 - Seafrost
 - University
- Key to Buildings**
- Hospital
 - Shopping
 - Sport and Leisure
 - University
 - Other building
 - Parks and open spaces
- Key to Attractions**
- Aquarium
 - Art Gallery
 - Caravan Site
 - Castle
 - Cathedral
 - Church
 - Cinema
 - Football ground
 - Historic Dockyard
 - Industrial heritage
 - Museum
 - Pier
 - Shopping
 - Sports Centre
 - Swimming Pool
 - Theatre
 - Tower or Folly
 - Walking Route
 - Information Centre
- Key to other symbols**
- Buses
 - Car Park
 - Coach Park
 - Indoor Play Area
 - Millennium Promenades
 - Play Area
 - Police Station
 - Post Office
 - Viewpoint
 - Park & Ride stop
- For Ferries follow symbols**
- Isle of Wight
 - Car
 - Passenger
 - Hovercraft
 - Gosport Passenger



P Parking Information
The car parks listed below are identified on the map by letters and symbols

Name	no. of spaces
A. All Saints (D2)	42
B. Ashby Place (C6)	61
C. Broad Street (A5)	29
D. BAR (restricted)	57
F. Southsea Common (C6)	68
G. Clarence Pier (B6)	154
H. Clarence Street (C2)	154
I. Seafrost, D-Day (C7)	125
J. Guildhall Walk (C4)	58
L. Gunwharf Quays (B4)	1400
M. The Harbour (B4)	62
N. City Centre South, Isambard Brunel (C4)	485
O. Seafrost, Canoe Lake (F7)	146
P. Port Solent (inset A1)	996
Q. Pyramids (D7)	148
R. Seafrost, Esplanade (B6)	373
S. Historic Ships (B3)	295

NCP car parks are located at:

- T. Cascades, Charlotte Street (C3)
- U. Station Street (C3)
- V. Crasswell Street (D3) multi-storey
- W. Crasswell Street (D3) surface

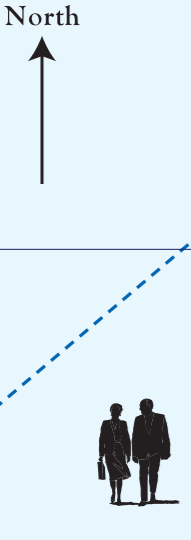
Coach Drop-Off point

- Isambard Brunel (C4)
- D-Day Museum (C7)
- Museum Road (C5)
- Port Solent (inset)
- St. George's Road (B4)

26
11
8
5

Based on aerial photography and field survey. While every effort has been made to ensure this map is accurate and up to date, neither the publishers or the copyright holders accept any liability for loss or inconvenience incurred as a result of any errors. The representation of any footpath, road or track on this map does not necessarily indicate any right of way.

Copyright © 2017 Portsmouth City Council. All rights reserved. This work is registered with the UK Copyright Service: Registration No: 331726



Portsmouth's vibrant past

From early beginnings in 1180, Portsmouth has a fascinating history just waiting for you to discover during your visit.



PORTCHESTER CASTLE

Old Portsmouth

Stroll through Old Portsmouth in the footsteps of Vice Admiral Lord Nelson (it is from here that he set off for the Battle of Trafalgar) and view the statue erected in his honour. Explore the historic fortifications at the entrance to Portsmouth Harbour including the Round Tower and the Square Tower—built in 1494 as part fortifications and as a home to the Governor of Portsmouth, the tower was converted to a gunpowder store in 1584 and restored to its present condition between 1979 and 1986.

View the Australian Settlers Memorial, recalling the sailing of the First Fleet of settlers from Spithead to Botany Bay, Australia, on 13 May 1787 and visit the creative quarter Hotwalls Studios.

“We love this area. Loads of old historic buildings, most with dubious pasts of smuggling, revelry and various other vices!”

TRIPADVISOR REVIEW

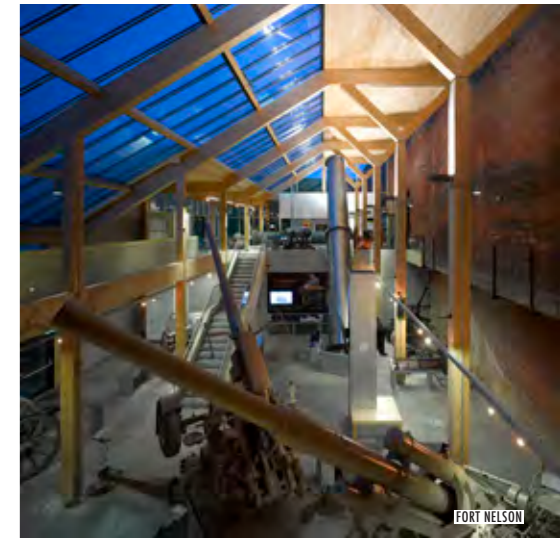


PORTSMOUTH MUSEUM AND ART GALLERY

St Thomas's Anglican Cathedral, known as the 'Cathedral of the Sea', is located on High Street in Old Portsmouth. It has witnessed war and peace, famous marriages, been bombed and rebuilt and remains a building of greatness and simple enduring beauty. Discover its fascinating history including the D-Day window and the grave of the unknown sailor from the Mary Rose. Nearby is the Garrison Church which has stood in Portsmouth for nearly 800 years serving as a medieval hospital, Tudor ammunition store and church for the forces since the 1580's.

Take time to treat yourself at a traditional pub or tea room, there are many to choose from. Pick up the chain motif in the pavement and follow the walk through Old Portsmouth into Gunwharf Quays and the Emirates Spinnaker Tower—or follow the totems along the seafront to Henry VIII's Southsea Castle and The D-Day Story. For a more in-depth dive into Portsmouth's history join one of the regular guided walks.

Portsmouth is a city with not one, but two cathedrals. St John's Catholic Cathedral, in the city centre, dates from 1882. The cathedral was badly damaged in one of the major air raids on Portsmouth during World War Two and renovation works were completed in 1950. Outside the Cathedral's west end stands the prominent sculpture of St John the Evangelist.



FORT NELSON

The Forts

Discover the national collection of artillery at Fort Nelson, strategically positioned with panoramic views atop Portsdown Hill. Explore 19 acres of ramparts, outer fortifications, secret underground tunnels, and ammunition bunkers at this fully restored Victorian fort.

Portchester Castle provides the perfect setting for a relaxed, fun, historic day out. The most impressive and best-preserved of the Roman 'Saxon Shore' forts, Portchester Castle was originally built in the late 3rd century. The castle's commanding location has made it a major factor in the Solent's defences for hundreds of years.

For a mix of history and luxury, take a boat trip out to one of the Solent Forts for a very special day out or overnight stay.

Portsmouth Museum and Art Gallery

With free admission, Portsmouth Museum and Art Gallery is a popular attraction for the whole family and a great place to begin your discovery into Portsmouth's diverse history. Find out how life in the city has changed from the 17th century to the present day.

Industrial heritage at Eastney

The Beam Engine and Gas Engine houses at Eastney include a pair of classic Boulton Watt beam engines and pumps restored to their original 1887 condition. Open once a month, free of charge, check online for details.

The great outdoors

Stretch your legs and enjoy some fresh air at Portsmouth's abundant outdoor spaces.



Portsmouth is a relatively small, very flat island—which makes getting around the city a total breeze. It's easy to walk from one side of Portsea Island to the other, and with great views to enjoy throughout, it's little surprise that simply getting into the great outdoors is high on the agenda for many visitors.

The most popular area for enjoying Portsmouth's scenery is the three-mile promenade that runs from Old Portsmouth to Eastney. Starting at the western end, you'll head past the historic Round and Square Towers, the Royal Garrison Church, two piers, the Hovertravel port, Southsea Castle, Canoe Lake and loads more besides—all the while with an unbroken view out to sea.

If you want to extend the route further, you can simply follow the Millennium Promenade as it winds through Old Portsmouth, before passing the Camber Docks, Wightlink ferry port and into Gunwharf Quays. Walking the trail couldn't be easier, as there's a chain link motif set into the pavement along its entire stretch, meaning you don't have to keep looking for wayfinders and can instead just enjoy the route.

Alternatively, Portsmouth's southern coast offers a range of beaches—all with their own distinct characteristics. The Hotwalls is an ideal place to watch vessels big and small navigate the busy shipping channel, whilst Southsea beach (between South Parade Pier and Clarence Pier) is where

many families head as soon as there's a chance of warm weather. Over at Eastney there's gorse and scrub along the beach, in an area where dogs are allowed year-round.

Portsmouth isn't just blessed with a beach and promenades, though, as there's a huge expanse of open land to enjoy—great for ball games, BBQs and some good old-fashioned sunbathing when the weather allows. Southsea Common is a 100-acre space situated right along the seafront—so it's little wonder the area is a popular haunt for visitors and residents alike. It's also home to a tennis centre, skatepark, beach volleyball courts and more—so there's much more to do than just go for a stroll!

However, if you'd prefer to get off the beaten track, there are plenty of outdoor

areas to enjoy away from Southsea seafront. Hilsea Lines is a firm favourite, with walkways stretching for miles along the northern coast of Portsea Island. Following recent flood defence works, the pathway that flanks Portsbridge Creek (the band of water that separates Portsmouth from the mainland and therefore makes us an island) has been raised—offering greater views of the small lakes and waterways dotted all around. Alternatively, you can take cover under the tree canopy of Foxes Forest, which is a haven for both dog walkers and off-road bikers. Following alongside West, East and Centre Bastions (the scheduled ancient monuments once used as military fortifications) you can walk the line in

around half an hour, but it's worth taking longer to spot the wading birds and other wildlife that have made their home along the way.

There's more wildlife to be found in the marshlands along the city's eastern coast. The 123-hectare Farlington Marshes Nature Reserve is at its best during the winter months, when migratory wildfowl take up residence. Those with a keen eye can expect to see thousands of birds, including brent geese, wigeons, teals, avocets, redshanks and dunlins. The lucky ones may also get to see short eared owls hunting over the fields.

Visitors in spring and summer still have plenty of birds to spot, among them warblers, redstarts, spotted flycatchers,

wrynecks, wheatears and whinchats. The area also thrums with the sounds of reed and sedge warblers.

Youngsters will find plenty to keep them entertained, meanwhile, over at Milton Locks Nature Reserve. The stretch of muddy beach and grassland is an ideal place to get out and spot creepy crawlies, or to watch the wading birds forage for their dinner. Insects and butterflies are abundant, whilst the shallow waters are often teeming with small fish.

Don't think that a city trip is all indoor attractions and smoggy air. There's much to enjoy when you explore the great outdoors at the Great Waterfront City.



GREAT SOUTH RUN



INEOS TEAM UK

INEOS TEAM UK TRAINING ON BRITANNIA DURING A TESTING SESSION ON THE SOLENT



PORTSMOUTH GOLF CENTRE

Sportsmouth

Portsmouth is a city with a proud sporting heritage, world-class facilities and a calendar of international events - be it road running at the Great South Run, or home matches at Portsmouth Football Club.

Smooth sailing

As the UK's only island city, Portsmouth is a prime destination for water sports of all kinds. The city boasts three marinas: Gunwharf Quays, Port Solent and Southsea Marina and is the home base of Ben Ainslie's Ineos Team UK.

The Andrew Simpson Watersports Centre is the first port of call for any enthusiast, with courses and access to water-based activities including sailing, rowing, power-boating, kayaking, canoeing and paddle-boarding. The centre also houses a 13-metre outdoor climbing tower; one for the brave!

Or try out wakeboarding at the South Coast Wakepark, equipped with a premier cable wake system and offering a wide range of equipment and hire gear.

Great South Run

The Great South Run is a major highlight of the Portsmouth sporting calendar and is recognised as the world's leading 10 mile running event. This fast, flat course is ideal for setting PBs, whilst also taking in some of the city's best scenery—from the beautiful seafront to Nelson's iconic HMS Victory. For one weekend, the roads of Southsea and Portsmouth are opened to athletes of all ages and abilities taking part in one of the scheduled races over two days. The Great South Run returns to Portsmouth 17–18 October 2020.

Whether you prefer to run the streets, the seafront or the track, Portsmouth has an ideal route for you. With miles of beautiful seafront promenade, Southsea is a runner's paradise, where you can train with a sea-breeze on your back and

beautiful views across the Solent towards the Isle of Wight and Hayling Island.

The seafront is also home to Southsea ParkRun, a free, volunteer-led 5k run open to everyone on Saturday mornings. Other running events in the city include the Coastal Half Marathon, Pretty Muddy and Race For Life events.

Cycle the city

Get in the saddle to explore Portsmouth by bike and you certainly won't be disappointed. With miles of dedicated cycle paths, Portsmouth is an amazing city to traverse on two wheels. We also host a growing number of cycling events; check out the www.visitportsmouth.co.uk website to find out more about these and all city events.

Sport centres

Portsmouth's Mountbatten Centre is home to an Olympic-sized pool, teaching pool, 150 state-of-the-art gym, health suite, 8-court sports hall, squash courts, athletics and cycle tracks, and a great programme of activities and events. Next door is Portsmouth Tennis Centre with 4 indoor and 6 outdoor courts.

Pyramids is Portsmouth's largest leisure centre, with masses to do – including a gym, fitness studio and spa, plus great water play for families and a three-level soft play adventure world filled with mazes, climbing nets and ball pits for the under 5s. The water play area has fantastic flumes to ride, as well as a full-sized pool for swimming and aqua aerobics, and a smaller teaching pool for kids.

Canoe Lake Leisure boasts four top-specification artificial grass tennis courts, in addition to its newly refurbished grass and hard courts. The centre also houses a brand new pavilion and is home to great tennis matches including the Southsea Trophy.

The Peter Ashley Activity Centres are located in the historic Fort Purbrook and Fort Widley. Activities include horse riding, archery, bush craft, mountain biking, a climbing wall, orienteering, rifle shooting and laser tag.

Great golf

Portsmouth boasts two 18-hole golf courses – Portsmouth Golf Centre and Portsmouth Golf Course. Both are available for pay and play, offering outstanding views and affordable sessions on great courses.

Skate away

The promenade along Southsea seafront is ideal for in-line and roller skating, whatever your age. It's also worth zipping down to Southsea Skatepark on the seafront, which is home to international-standard ramps. In winter enjoy skating on real ice in front of Portsmouth Guildhall.

Outdoor family fun

When the weather's good you can't beat Southsea's seafront. It offers miles of pebble beaches to explore and gigantic green spaces where you can let off some steam and enjoy the sea air.

There are also tennis courts, adventure mini golf, a pitch 'n' putt green and beach volleyball courts to keep you entertained. On warm days the beaches in Southsea are perfect for a swim or a paddle, alternatively you can take the children to the under-eight's splash pool on Southsea seafront, or the water splash at Canoe Lake, for some free fun.

Hilsea Lido offers outdoor swimming, diving and a splash pool. Dating back to the 1930s, the Lido is found in the beautiful setting of Hilsea Lines.



MOUNTBATTEN CENTRE

PORTSMOUTH CATHEDRAL

The Cathedral of the Sea...
 for over 800 years people have been inspired and moved by its history and beauty

WONDER
 DISCOVER &
 EXPERIENCE

OPEN EVERY DAY

2020 Year of Cathedrals
 Year of Pilgrimage

Guided tours available
 Cathedral Shop open Monday-Saturday
 See website for service times and events

Suggested donation £5

023 9282 3300 www.portsmouthcathedral.org.uk
 High Street, Old Portsmouth, PO1 2HH

hotwalls STUDIOS

open studios

Every third Sunday of the month, 11am – 4pm.
 An opportunity to visit our creative studios, see all our artists and makers at work and buy or commission professional pieces.

www.hotwallsstudios.com @hotwallsstudios

Portsmouth the great waterfront city Portsmouth CITY COUNCIL

TAKE FLIGHT BY HOVERCRAFT

SOUTHSEA, PORTSMOUTH TO RYDE, ISLE OF WIGHT

JUST 10 MINUTES ACROSS THE SOLENT

WORLD'S ONLY COMMERCIAL PASSENGER HOVERCRAFT SERVICES

Visit the Isle of Wight for day trips, short breaks, attractions, dining, outstanding scenery and beautiful sandy beaches...

@hovertravelld /hovertravelld info@hovertravel.com www.hovertravel.co.uk

HOVER TRAVEL

TAXI

aquacars
 Taking you there, Taking you home

02392
654321

DOWNLOAD OUR **FREE** App

from the App Store

FOR BOOKINGS AND CONTACTLESS PAYMENTS
 – CAN BE USED IN ALL MAJOR UK CITIES –

VISA MasterCard
 ALL MAJOR CREDIT CARDS

YOUR LINK TO
the Isle of Wight

Our FastCat passenger service connects Portsmouth with Ryde on the Isle of Wight in just 22 minutes – the perfect place to start your Island adventure on foot, by bike or by train.

WIGHTLINK
 ISLE OF WIGHT FERRIES

YOUR LINK TO THE ISLAND
 Book your trip now at wightlink.co.uk

Travel information



Portsmouth is a key international gateway, ideally situated on England's south coast.

Planning your journey

With a motorway into the heart of the city, an international port, rail services direct to London from 90 minutes and international airports close by, access to Portsmouth couldn't be easier, whether you are coming to the city from within the UK or overseas.

Useful sources of travel information to help you plan your journey:

Visitor Information Service at the Hard transport hub
www.visitportsmouth.co.uk
 ✉ vis@portsmouthcc.gov.uk
 ☎ 023 9282 6722

www.myjourneyportsmouth.com

National Express:
www.nationalexpress.com
 ☎ 08717 818181

MegaBus:
www.megabus.com

National Rail Enquiries:
www.nationalrail.co.uk
 ☎ 08457 484950

Driving and Park and Ride

Portsmouth enjoys good road connections; the A3(M) puts London just over an hour away and the M275 connects Portsmouth with the M27 and the rest of Britain's motorway network.

Portsmouth's Park and Ride is accessed direct from the M275 as you drive into the city and offers visitors a quick, easy and affordable way to visit. Stops include the city centre shopping area and The Hard for Gunwharf Quays and the Historic Dockyard.

www.parkandride.portsmouth.gov.uk

Rail

Travelling to Portsmouth by train is a great option with regular direct services to London (from 90 mins), the south coast and the rest of the UK. Book in advance and take advantage of regular special offers.

Coach

Scheduled coaches including National Express and Megabus have routes to Portsmouth, along with a number of tourist coach services.

Portsmouth International Port

Regular ferry services sail to Caen, Cherbourg and Le Havre in Normandy and St Malo in Brittany, for short breaks and easy onward travel throughout France.

Spanish destinations are Santander and Bilbao and there are also frequent sailings to Jersey and Guernsey. If you are coming to Portsmouth to catch a ferry, why not start your holiday early with a day exploring Portsmouth?



Cruises

Major operators and cruise lines have chosen Portsmouth for its superb position and impressive facilities, offering customers inspiring destinations aboard beautiful luxury liners. Cruise calls to the city offer passengers the opportunity to explore the city's wealth of attractions, great shopping, dining and entertainment.

Air

Portsmouth is easily accessible by air. Southampton International Airport (www.southamptonairport.com) is just 22 miles away and the major London airports Gatwick and Heathrow are both 60 miles away with easy rail access to the city.

Average walking times from Portsmouth and Southsea train station		Average walking times from Portsmouth Harbour train station	
Portsmouth Guildhall	⌚ 4 mins	Gunwharf Quays	⌚ 4 mins
New Theatre Royal	⌚ 5 mins	Portsmouth Historic Dockyard	⌚ 6 mins
City Centre shopping	⌚ 6 mins	Emirates Spinnaker Tower	⌚ 8 mins
Kings Theatre	⌚ 23 mins	Portsmouth Museum and Art Gallery	⌚ 14 mins
Palmerston Road shopping	⌚ 25 mins	Old Portsmouth	⌚ 15 mins
D-Day Story and Southsea Castle	⌚ 32 mins	Clarence Pier and Seafront Esplanade	⌚ 24 mins
Pyramids	⌚ 33 mins	D-Day Story and Southsea Castle	⌚ 36 mins

Isle of Wight

Travelling to and from the Isle of Wight couldn't be easier. Hovertravel operates a passenger hovercraft from Southsea to Ryde, the world's only year-round hovercraft service. Wightlink operates both a car ferry service from Portsmouth to Fishbourne and a foot passenger catamaran service from Portsmouth Harbour to Ryde Pier.

Walking and cycling

The city is flat and compact, making walking and cycling convenient modes of transport. Park up your vehicle or travel by public transport and explore the city on foot.

Visit Portsmouth

Escape to the Waterfront by Train

From the proud, historic warships to the ultra-modern eateries at the top of the harbour's Spinnaker Tower, Portsmouth is home to the past and future of waterfront wonders.

BOOK IN ADVANCE FOR BIG SAVINGS

South Western Railway





OSBORNE HOUSE, ISLE OF WIGHT

Out and about

Portsmouth is the ideal base to explore England's beautiful south coast. Stay longer and discover more in the area.



ROYAL NAVY SUBMARINE MUSEUM

Submarines and more at Gosport

A short ferry ride across Portsmouth Harbour is Gosport. Find out what lurks beneath the waves at the Royal Navy Submarine Museum, or learn about the weapons used by the Royal Navy at Explosion!—Museum of Naval Firepower. See the fascinating diving exhibits at the Diving Museum, which was voted one of the top six family-friendly museums in the UK, or step back in time with a wander through the 1642 Living History Village.

Set sail to the Isle of Wight

Take the short journey across to the Isle of Wight where you will find a wealth of attractions including the famous Carisbrooke Castle and Osborne House, once home to Queen Victoria. With regular hovercraft, catamaran and car ferry sailings with crossing times from only 10 minutes, combining your city break with a visit to the Island couldn't be easier.

Explore the beautiful National Parks

Right on our doorstep you'll find the South Downs National Park, full of fascinating trails to walk or cycle and some great adventure pursuits such as horse riding, hot-air ballooning, golf, hang-gliding and paragliding.

The 140,000 acre New Forest National Park offers a wealth of places to visit and is a haven for cyclists, horse riders and walkers. Discover the beautiful open heaths, ancient oaks and tall pines then meet the famous New Forest ponies as well as deer and cattle in their natural habitat. Visit Beaulieu for the National Motor Museum, Palace House and Beaulieu Abbey.

Discover Sussex

Just along the coast is the beautiful county of West Sussex, rich in history, from the impressive Arundel Castle, historic houses, racing and museums

to suit all interests to the city of Chichester with its Roman roots, palace at Fishbourne and fascinating Tangmere Aviation Museum.

Take your place at the round table

In Winchester, visit King Arthur's legendary round table and the ancient Winchester Cathedral, the burial place of Jane Austen. Meander down historic streets of the former ancient capital of England. Nearby Marwell Zoo, great for a day out, is inhabited by more than 250 exotic and endangered species.

Capital attractions

And don't forget London is just over 90 minutes away by train or coach. Arriving at Waterloo or Victoria you are in easy reach of the London Eye, Imperial War Museum, South Bank, Big Ben and the rest of the many amazing tourist attractions, it couldn't be easier to take a day trip to the capital.



NEW FOREST NATIONAL PARK

“The New Forest is a magical place. It's huge and has a wonderful lake, where you can walk and see lots of wildlife.”

TRIPADVISOR REVIEW



ARUNDEL CASTLE



BOMBAY SAPPHIRE
Distillery

Explore the home of Bombay Sapphire gin

THE BOMBAY SAPPHIRE DISTILLERY IS LESS THAN AN HOUR FROM PORTSMOUTH IN WHITCHURCH, HAMPSHIRE. ENJOY 10% OFF ONLINE BOOKINGS OF THE SELF-DISCOVERY EXPERIENCE SUNDAY – FRIDAY WITH THE CODE PORTS10 UNTIL 31ST MARCH 2021.

BOOK ONLINE IN ADVANCE AT DISTILLERY.BOMBAYSAPPHIRE.COM

STUNNING Art SOARING Architecture

OPENS 1ST APRIL – 1ST NOVEMBER 2020

ANCIENT CASTLE, STately HOME & GARDENS | FOR MORE DETAILS, CALL 01903 882173 OR VISIT WWW.ARUNDELCASTLE.ORG | ARUNDEL CASTLE

Great places to stay

Portsmouth has a wealth of accommodation—you will find everything from top quality luxury hotels to boutique chic, plus a superb choice of guest houses and bed and breakfasts. The following advertisements showcase a selection of what is on offer. For more details and further information go to www.visitportsmouth.co.uk

Booking conditions

The information contained in this guide is correct at time of going to press. Please note that proprietors reserve the right to amend prices and conditions from those in this guide and/or impose additional conditions, provided they inform you of such conditions before they accept your booking.

Holiday insurance

Don't forget to make sure you have insurance to cover any losses you may incur. Even if you are travelling within the UK, insurance costs very little and could save you a great deal.

Key to facilities

- | | |
|----------------------------------|-------------------------------|
| Facilities for hearing impaired | Electric shaver point |
| Facilities for visually impaired | Linen supplied free of charge |
| Licensed for alcohol | Linen for hire |
| Restaurant or café | Iron available |
| Breakfast | Cots available |
| Tea/coffee making facilities | Dogs welcome |
| WiFi | Conference facilities |
| Off street parking | Lift |
| Ground floor bedrooms | Credit cards accepted |
| Children welcome – minimum age | Staff speak foreign languages |
| TV in rooms | Cooker |
| Ensuite rooms available | Refrigerator provided |
| Lounge for residents | Laundry |
| Air conditioning | Dishwasher |
| Hairdryer | Microwave |

Important note: Whilst every effort has been made to ensure that the information in this publication is correct, Portsmouth City Council cannot guarantee complete accuracy of the information and all liability for loss, disappointment, negligence or other damages caused by this publication, is hereby excluded. As changes often occur after press date, it is advisable to confirm the information given with the relevant organisation. All information is for guidance only, and was current as of December 2019.

PortCreative

The Official Portsmouth Visitor Guide is designed by **PortCreative**, a full-service creative agency based on the south coast of England. If you like the visitor guide, then let's talk. We would love to work with you!

023 9283 4086 | hello@portcreative.co.uk | www.portcreative.co.uk

HOLIDAY INN PORTSMOUTH

Map page 24
Ref B5

Pembroke Road, Portsmouth, PO1 2TA
 T: 0871 942 9065
 E: events@hiportsmouthhotel.co.uk
 W: www.hiportsmouthhotel.co.uk

Whether you are in the area for business or leisure, The Holiday Inn Portsmouth is ideally located just minutes from the city centre and the seafront.

The newly designed Portsmouth hotel features 173 stylish and comfortable guest rooms all with modern ensuite bathrooms.

The stunning 'open lobby' dining concept brings together the bar and restaurant into one flexible space with all day dining, Starbucks coffee, local ales and a range of popular gins.

The onsite You Fit Health Club is the perfect place to get active and burn off some energy or simply relax and unwind with facilities including a gym, swimming pool, steam room, sauna and Jacuzzi.

Our Academy conference centre can accommodate 2 to 200 delegates with our 10 flexible layout meeting rooms and a dedicated conference host who will be on hand throughout the day to ensure the day runs smoothly.

With onsite car parking and complimentary high-speed Wifi throughout the Holiday Inn is ideal for your stay in Portsmouth.

Price: From £89 per room per night

Rooms: 173 En suite: All

Facilities:



HOLIDAY INN EXPRESS, PORTSMOUTH-GUNWHARF QUAYS

Map page 24
Ref B4

The Plaza, Gunwharf Quays, Portsmouth, PO1 3FD
 T: 023 9289 4240
 E: frontdesk.hixportsmouth@kewgreen.co.uk
 W: www.hiexpressportsmouth.co.uk

Located at the heart of the hustle and bustle of Gunwharf Quays, the Holiday Inn Express is perfectly located within walking distance from a great array of bars, restaurants and plenty of shops along with Portsmouth's main attractions like the Spinnaker Tower and Historic Dockyard.

The hotels 130 newly refurbished bedrooms ensure a comfortable stay in a stylish room and the refurbished 'open lobby' concept creates a relaxed space to enjoy a drink after a busy day shopping or tuck into a tasty continental breakfast in the morning for a great start to the day with a variety of hot and cold options.

With free WiFi, 24 hour Parking and 2 meeting rooms make Holiday Inn Express Gunwharf - Quays your next destination.

Price: From £99 per room per night

Rooms: 130 En suite: All

Facilities:



IBIS PORTSMOUTH

Map page 24
Ref C4

Winston Churchill Avenue, Portsmouth, PO1 2LX
T: 023 9264 0000 **E:** H1461@accor.com
W: www.accorhotels.com

Located in the centre of the beautiful city of Portsmouth, we're the perfect base from which to enjoy events and attractions in the city and surrounding areas. Marvel at the Goodwood Festival of Speed, challenge yourself in the Great South Run or find harmony at the Victorious music festival and much more – all from the comfort and convenience that Ibis Portsmouth Centre provides.

We look forward to making you feel welcome.

Price: From £60 – £179 per room per night
Rooms: 144 **En suite:** All

Facilities:



IBIS BUDGET PORTSMOUTH

Map page 25
Ref F4

Unit 4, Fratton Way, Portsmouth, PO4 8SL
T: 023 9264 0000 **E:** H1461-RE@accor.com
W: www.accorhotels.com

Take your time enjoying a tasty continental breakfast buffet with our relaxed noon check-out. Choose from triple, double or twin rooms to suit you, chill out in our spacious, well-decorated lobby area and stay connected while you're away from home with free fibre Wi-Fi throughout the building. The hotel is close to the city centre of Portsmouth and in close proximity to the beach, shopping and nightlife of the town. With the friendliest team in the south, our affordable Portsmouth hotel offers all the mod cons, pet-friendly and 120 bedrooms with Sweet Beds and en-suite power showers.

We look forward to making you feel welcome.

Price: From £35 – £120 per room per night
Rooms: 120 **En suite:** All

Facilities:



ROYAL MARITIME CLUB & HOTEL

Map page 24
Ref B3

75–80 Queen Street, Portsmouth, Hampshire, PO1 3HS
T: 023 9282 4231 **E:** info@royalmaritimeclub.co.uk
W: www.royalmaritimeclub.co.uk

The Royal Maritime Club & Hotel is one of the oldest and most historic hotels in Portsmouth. The hotel is steeped in maritime history and offers 100 en-suite comfortable bedrooms and a whole host of leisure facilities. The Royal Maritime Club & Hotel is located just a five minute walk away from the Portsmouth Historic Dockyard and other historic city attractions, as well as the city's popular waterside shopping and leisure destination, Gunwharf Quays.

- 100 en-suite comfortable bedrooms
- Swimming pool with hydrojets (fully accessible), sauna and spa pool
- Snooker and skittle alleys
- Horatio's Restaurant, Compass Café and Victory Bar
- Function rooms; suitable for conferences and licenced for weddings

Price: £100–£150 per room per night

Rooms: 100 **En suite:** All

Facilities:



PORTSMOUTH MARRIOTT HOTEL



Southampton Road, Portsmouth, Hampshire PO6 4SH
T: 023 9238 3151 **E:** portsmouth.events@marriotthotels.co.uk
W: www.marriott.com

Discover the striking beauty of England's South Coast with a visit to Portsmouth Marriott Hotel.

Conveniently located near both the train and the motorway, and just a short distance from popular landmarks such as Spinnaker Tower, we offer an excellent backdrop for business trips and family holidays.

Sophisticated rooms and suites, high-speed Wi-Fi and blackout curtains, as well as coffee makers and flat-screen TVs.

Enjoy a meal at Cast Iron Bar & Grill, our hotel restaurant, or order 24-hour room service.

Additional 4-star perks include a tranquil on-site spa and a leisure club with a gym.

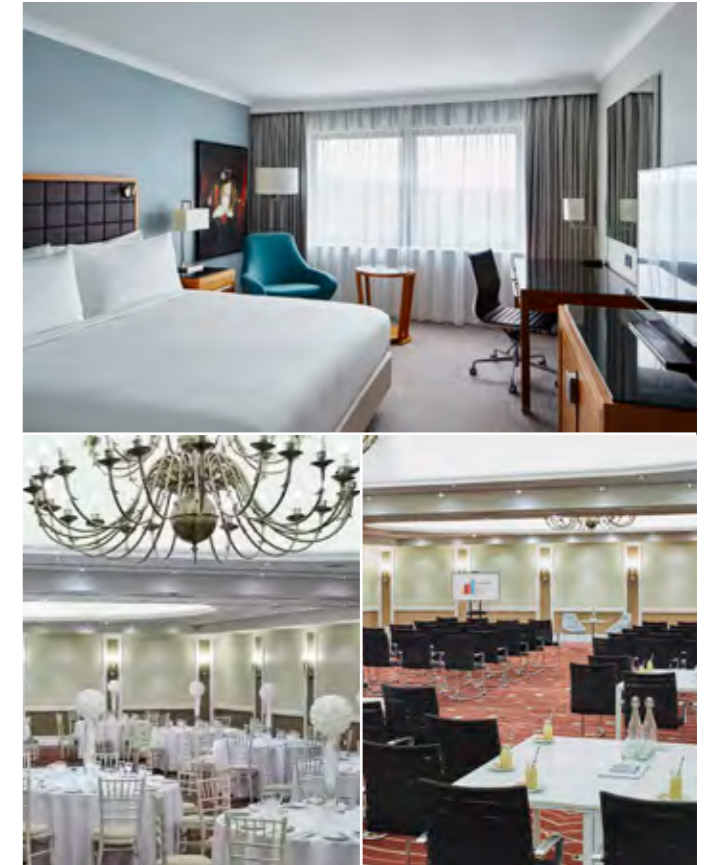
Plan an event in one of our easily configurable function rooms, some of which feature warm natural light, or consider hosting an outdoor event in our garden in the warmer months.

We hope you'll take time to explore attractions including Portsmouth's Historic Naval Dockyard and Gunwharf Quays, too. Plan your UK getaway with us today at the 4-star Portsmouth Marriott Hotel.

Price: From £89 per room per night

Rooms: 174 **En suite:** All

Facilities:





Lakeshore Drive, Portsmouth, PO6 3FR
T: 023 9200 6245 **E:** portsmouthhub@village-hotels.com
W: www.village-hotels.com

Village Hotel Club Portsmouth has 153 super stylish hotel rooms, as clever as they are comfortable, with big TVs, handy gadgets and refreshing drench showers. Upgrade to a Club Room for even more extras, including exclusive toiletries, Nespresso coffee machine and free Gym access.

Village Gym is a huge state of the art health club with the latest Technogym cardio equipment and a choice of award-winning classes such as BodyPump, BodyCombat, BodyAttack Mind and Body. Village's HIIT class 'Burn', the ultimate calorie-burning session, and classes by Les Mills®. And if all that sounds too energetic, you can enjoy a gentle swim in our 20 metre pool, followed by a steam and sauna.

Our Pub & Grill is at the heart of Village Portsmouth, with a vibrant, inviting, friendly atmosphere. Watch live sport on giant HD screens, enjoy ice cold beers and a great choice of wines and cocktails. Tuck in to one of our famous, juicy burger stacks and dare to take on our devilishly hot wings. Or, if you prefer a delicious healthy option, try our succulent skewers or halloumi bowls.

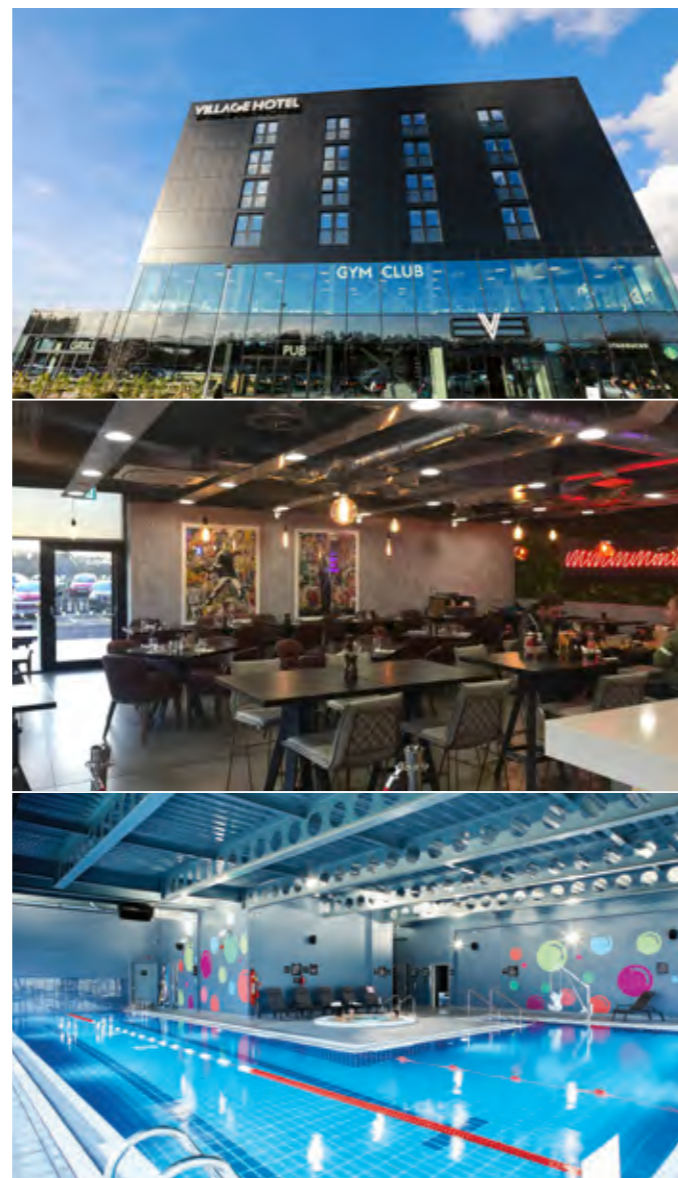
We even have our own in-house Starbucks, so you can wake up to your favourite coffee and tasty snack!

And if you're visiting Village Portsmouth at the weekend, then you're in for an extra treat. Our hugely popular Tribute and Party nights are great fun. Sing and dance the night away to all your favourites before heading upstairs for a great night's sleep in your big comfy bed.

Village Portsmouth is conveniently located just off the M27 motorway, and just a short drive from Portsmouth's city centre.

Booking your stay at Village couldn't be easier on our easy to use website, or via our app, downloadable from the App Store or Google Play.

Price: From £45 – £180 per room per night
Rooms: 153 **En suite:** All
Facilities:



ESK VALE GUEST HOUSE

Map page 24
Ref E7

39 Granada Road, Southsea, Portsmouth, PO4 0RD
T: 023 9286 2639 **E:** enquiries@eskvaleguesthouse.co.uk
W: www.eskvaleguesthouse.co.uk

Just a 2 minute walk from Southsea beach and local attractions.

Our aim is to offer you a warm welcome, a pleasant stay and a good old English breakfast to start the day.

Price: £35–£100 per room per night, or £35–£60 per person per night
Rooms: 8 **En suite:** 6
Facilities:



REES HALL

Map page 24
Ref C5

Southsea Terrace, Southsea, Portsmouth, PO5 3AP
T: 023 9284 4884 **E:** reservations@port.ac.uk
W: www.eventportsmouth.co.uk

Rees Hall is a modern building located on Southsea seafront with views across Southsea Common and the Solent. It is also a short distance from Gunwharf Quays and the Historic Dockyard.

The award-winning Rees Hall provides the ideal venue for a leisure break or business trip, with a wide range of quality comfortable en-suite rooms, two guest lounges, bar and quiet courtyard garden.

- Full English breakfast and free WiFi included.
- Coach parties welcome.
- Conference facilities available.
- Rooms available from June to September.

Price: From £52 – £84 per room per night

Rooms: 226 **En suite:** All

Facilities:



HOME FROM HOME PORTSMOUTH

Various locations in Southsea and Gunwharf Quays
T: 07763 803554 **E:** jane@homefromhomeportsmouth.com
W: www.homefromhomeportsmouth.com

We offer apartments in the best locations across Portsmouth and Southsea, including sea views, serving a range of guests from around the world; holiday makers, working people, professionals and students. We also offer property services to investors and other landlords.

Price: From £80 – £350 per unit per night

Units: 9 **Sleeping capacity:** 1–9

Facilities:



LAKESIDE APARTMENTS

Map page 25
Ref F6

5 Helena Road, Southsea, Portsmouth, PO4 9RH
T: 07810 436981/023 9282 0690 **E:** info@lakesidesouthsea.com
W: www.lakesidesouthsea.com

Price: From £250 – £360 per unit per week

Units: 6 **Sleeping capacity:** 2/+child

Facilities:



Quiet, fully furnished self-catering apartments, great location for visiting all the fantastic sites of Portsmouth. Five-minute walk from the Seafront, Canoe Lake, Museums – Ideal base for all things nautical.

Open all year round, Pets welcomed, all major credit cards accepted.

Weekly bookings Friday – Friday.

Non-smoking establishment.

bluereef
AQUARIUM.PORTSMOUTH

THE LOCAL UNDERSEA ADVENTURE!

BUY ONLINE AND SAVE
bluereefaquarium.co.uk/portsmouth

Tel: 023 9287 5222
Email: portsmouth@bluereefaquarium.co.uk
Chesnes Esplanade, Southsea,
Portsmouth, PO5 3PS

Find out more about Portsmouth's incredible history by joining one of the city's regular **guided walks**

Full listing available on visitportsmouth.co.uk

Portsmouth
the great waterfront city

PORTSMOUTH
CITY OF
MUSEUMS

Charles Dickens' Birthplace Museum

www.charlesdickensbirthplace.co.uk

Portsmouth Museum

www.portsmouthcitymuseums.co.uk

Cumberland House Natural History Museum

www.portsmouthnaturalhistory.co.uk

Southsea Castle

www.southseacastle.co.uk

Free entry to Portsmouth Museum, Cumberland House Natural History Museum, Southsea Castle and a small admission fee for Charles Dickens' Birthplace, please see www.charlesdickensbirthplace.co.uk for details.

Portsmouth CITY COUNCIL the great waterfront city

VISITOR INFORMATION

Portsmouth's award-winning visitor information service is here to offer you a warm welcome and help you make the most of your time in this vibrant city.

Staff can help with:

- information on local, regional and national attractions and events
- tickets for Portsmouth attractions – with up to 10% discount
- theatre, ferry and coach trip tickets
- accommodation
- local gifts, books and souvenirs

If you're organising a visit for 10 or more people to Portsmouth, make sure you check out the great group rates and offers available to you. We can offer advice on group deals at hotels and attractions, coach parking, or tours and experiences that will make your visit that little bit different.

Find out more about Portsmouth's incredible history by joining one of the city's regular guided walks.

Book a Greeter for groups of six or less or a Tourist Guide* for larger groups (*fee charged).

For more information, contact the visitor information service. Call **023 9282 6722**, go to www.visitportsmouth.co.uk, or email vis@portsmouthcc.gov.uk

Follow us on Twitter for the latest news and events [@visitportsmouth](https://twitter.com/visitportsmouth)

Follow Portsmouth on Facebook.com/portsmouththewaterfrontcity

Experience Portsmouth on YouTube – search for 'Visit Portsmouth'



THE D-DAY STORY
PORTSMOUTH

We shared everything we had.

Cocoa. Laughter. Heartbreak.

Photograph © IWM (B 5254)



Visit The D-Day Story and discover the personal stories behind the epic day.
thedaystory.com

**VICTORIOUS
EVENTS**

We help build
incredible experiences

Event delivery provider.

**Concessions
Management
Production
Operations
Event
Management
Consultancy
Infrastructure
& more**



victoriousevents.co.uk